

# Dorner 2200 Belt Conveyor

## Contents

[Overview](#)

[Applications](#)

[Technical Specifications](#)

[Available Sizes](#)

[Suggested Mounting](#)

[Calculation Required Driving](#)

[Force](#)

[Force vs. Speed](#)

[Assembly Instructions](#)

[Transfer Plate](#)

## Overview

Use this technical document to guide your selection of belt conveyor size, power transmission options, to ensure that you buy the correct combination of components for your application. This document will outline how to calculate the required forces to transfer your goods as well as the corresponding powertrain combinations to meet those requirements.

## Applications

Applications for belt conveyors are diverse, but at their core a belt conveyor is always used to move an object from position A to position B. Applications vary from simple conveying systems to complex pick and place systems with indexing and part accumulation. Check out our design library for inspiration.

[Browse Open Source Designs](#)

## Technical Specifications

	152mm Wide	305 to 610 mm Wide
Rated Payload Pulling (kg)*	27.2	36.3
Rated Payload Pushing (kg)*	13.6	18.2
Displacement Ratio (mm/turn)	73.563	73.563
Max Speed (mm/s)	2000	2000
Belt Material	Medium Friction Urethane	Medium Friction Urethane

\* Note: the rated load of the conveyor is not the same in both directions because of the end drive configuration. The belt can move a larger payload when it is moving the payload towards the motor (pulling) compared to when the payload is moving away from the motor (pushing).

Above ratings for maximum payload are calculated at equilibrium and assume a horizontal conveyor. The limiting factor is slip between the belt and conveyor pulley. To determine the correct powertrain for more complex applications that include accelerations and inclines see the Calculating Required Driving Force section on this page.

## Available Sizes

Conveyor Length	152 mm Width	305 mm Width	457 mm Width	610 mm Width
-----------------	--------------	--------------	--------------	--------------

Conveyor Length	152 mm Width	305 mm Width	457 mm Width	610 mm Width
585	MO-CV-004-0585	MO-CV-005-0585	MO-CV-006-0585	MO-CV-007-0585
765	MO-CV-004-0765	MO-CV-005-0765	MO-CV-006-0765	MO-CV-007-0765
945	MO-CV-004-0945	MO-CV-005-0945	MO-CV-006-0945	MO-CV-007-0945
1125	MO-CV-004-1125	MO-CV-005-1125	MO-CV-006-1125	MO-CV-007-1125
1305	MO-CV-004-1305	MO-CV-005-1305	MO-CV-006-1305	MO-CV-007-1305
1530	MO-CV-004-1530	MO-CV-005-1530	MO-CV-006-1530	MO-CV-007-1530
1710	MO-CV-004-1710	MO-CV-005-1710	MO-CV-006-1710	MO-CV-007-1710
1890	MO-CV-004-1890	MO-CV-005-1890	MO-CV-006-1890	MO-CV-007-1890
2070	MO-CV-004-2070	MO-CV-005-2070	MO-CV-006-2070	MO-CV-007-2070
2295	MO-CV-004-2295	MO-CV-005-2295	MO-CV-006-2295	MO-CV-007-2295
2475	MO-CV-004-2475	MO-CV-005-2475	MO-CV-006-2475	MO-CV-007-2475
2655	MO-CV-004-2655	MO-CV-005-2655	MO-CV-006-2655	MO-CV-007-2655
2835	MO-CV-004-2835	MO-CV-005-2835	MO-CV-006-2835	MO-CV-007-2835
3060	MO-CV-004-3060	MO-CV-005-3060	MO-CV-006-3060	MO-CV-007-3060
3240	MO-CV-004-3240	MO-CV-005-3240	MO-CV-006-3240	MO-CV-007-3240

## Suggested Mounting

Optimal conveyor mounting depends on the payload as well as the width and length of the conveyor. The following table can be used as a conservative guide. The mounting points should be spaced as evenly as possible. The number in the light blue section corresponding to the length and width of your conveyor indicates the suggested number of brackets to be used.

Length (mm)	Width (mm)	Number of brackets
585 - 1305	152	4
585 - 1305	305	4
585 - 1305	457	4
585 - 1305	610	4
1530 - 2070	152	4
1530 - 2070	305	4
1530 - 2070	457	4
1530 - 2070	610	6

Length (mm)	Width (mm)	Number of brackets
2295 - 2655	152	6
2295 - 2655	305	6
2295 - 2655	457	6
2295 - 2655	610	8
2835 - 3240	152	6
2835 - 3240	305	6
2835 - 3240	457	8
2835 - 3240	610	8

### Calculation Required Driving Force

To calculate the required linear force to drive your payload a few things must be considered. Main considerations are the desired acceleration of the belt when starting, the force required to deform the belt over the rollers, if the belt is on an incline or not, and what the friction generated by the payload is. The sum of these four forces will give the required linear force of the belt conveyor.

$$F_{req}[N] = m[kg] \cdot \ddot{a}_{desired} \left[ \frac{m}{s^2} \right] + m[kg] \cdot g \left[ \frac{m}{s^2} \right] \cdot \sin\theta + \mu \cdot m[kg] \cdot g \left[ \frac{m}{s^2} \right] \cdot \cos\theta + F_{deformation} [N]$$

Simplified as:

$$F_{req}[N] = m[kg] \cdot \left( \ddot{a}_{desired} \left[ \frac{m}{s^2} \right] + g \left[ \frac{m}{s^2} \right] \cdot \sin\theta + \mu \cdot g \left[ \frac{m}{s^2} \right] \cdot \cos\theta \right) + F_{deformation} [N]$$

$$F_{req}[N] = m[kg] \cdot \left( \ddot{a}_{desired} \left[ \frac{m}{s^2} \right] + 9.81 \left[ \frac{m}{s^2} \right] \cdot \sin\theta + 3.2373 \left[ \frac{m}{s^2} \right] \cdot \cos\theta \right) + F_{deformation} [N]$$

$m$  = mass of payload [kg]

$\ddot{a}_{desired}$  = desired acceleration of payload  $\left[ \frac{m}{s^2} \right]$

$g = 9.81 \left[ \frac{m}{s^2} \right]$

$\theta$  = inclination angle from horizontal

$\mu = 0.33$

$F_{deformation}$  = force required to deform the belt over the roller. See below table.

The deformation force for each conveyor width is provided in the table below. This value represents the torque and equivalent force required to deform the belt over the conveyor rollers. The value also includes other small parasitic losses in the system.

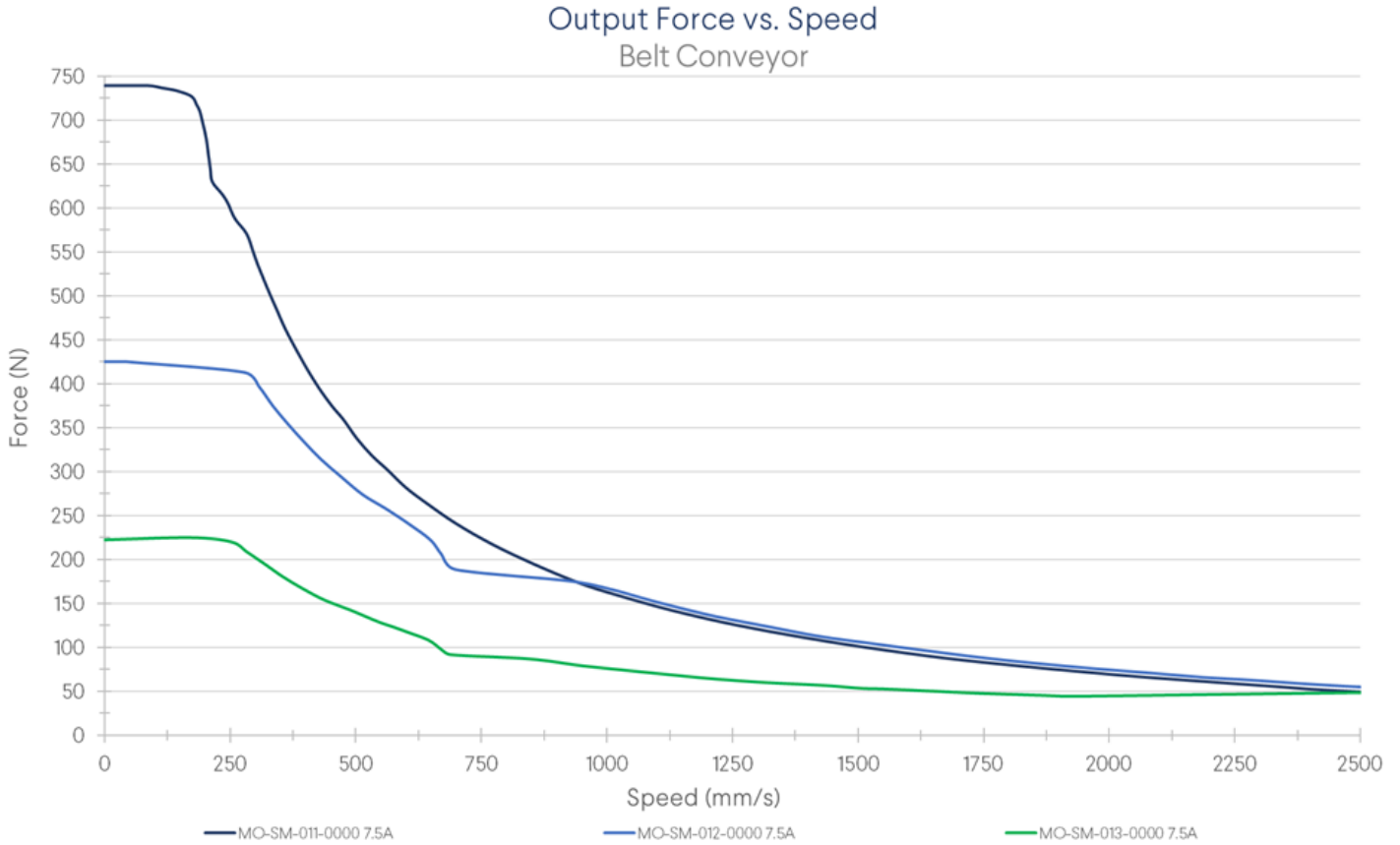
Belt Width (mm)	Deformation Force (N)
152	56.5
305	98.9
457	120
610	141

After the required driving force has been calculated, compare it to the force vs speed graph below.

As an example, a conveyor needs to move a load of 20 kg at 500mm/s up a 10 degree incline. The conveyor must occasionally be able to accelerate the mass at  $0.5\text{m/s}^2$ . The width of the belt conveyor is 457mm.

In this case our variables are 20kg for mass,  $0.5\text{m/s}^2$  for acceleration, 10 degrees for angle theta, and 120N for deformation force. These variables lead to a required driving force of 227.8N and 500mm/s. Looking at the Force vs speed graph below it can be seen that the MO-SM-011-0000 or MO-SM-012-0000 motors will be required to meet these requirements.

### Force vs. Speed

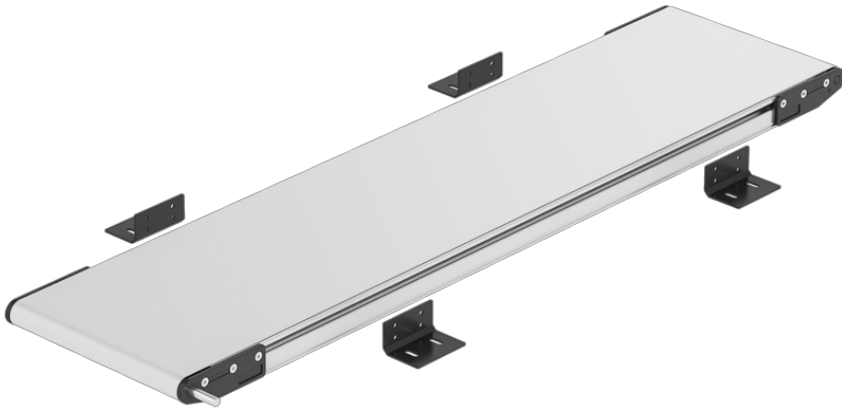


**Exhibit 1. Belt conveyor linear force using Vention's three NEMA 34 motor options, driven by MachineMotion 2.**

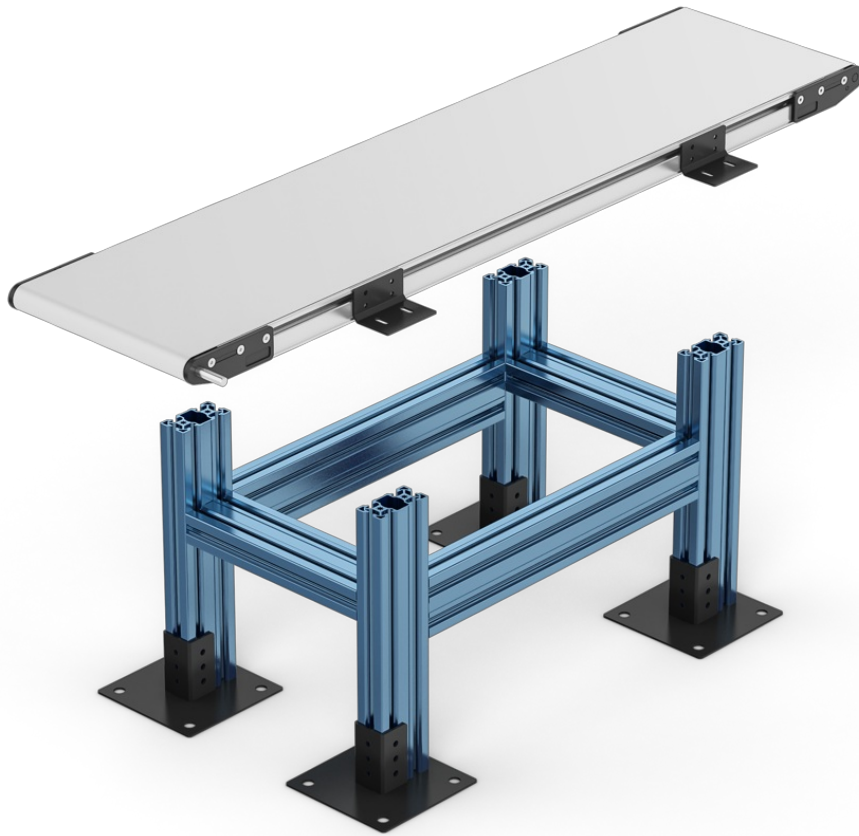
Once the motor type has been selected based on required force and speed you can add the appropriate part to your design.

### Assembly Instructions

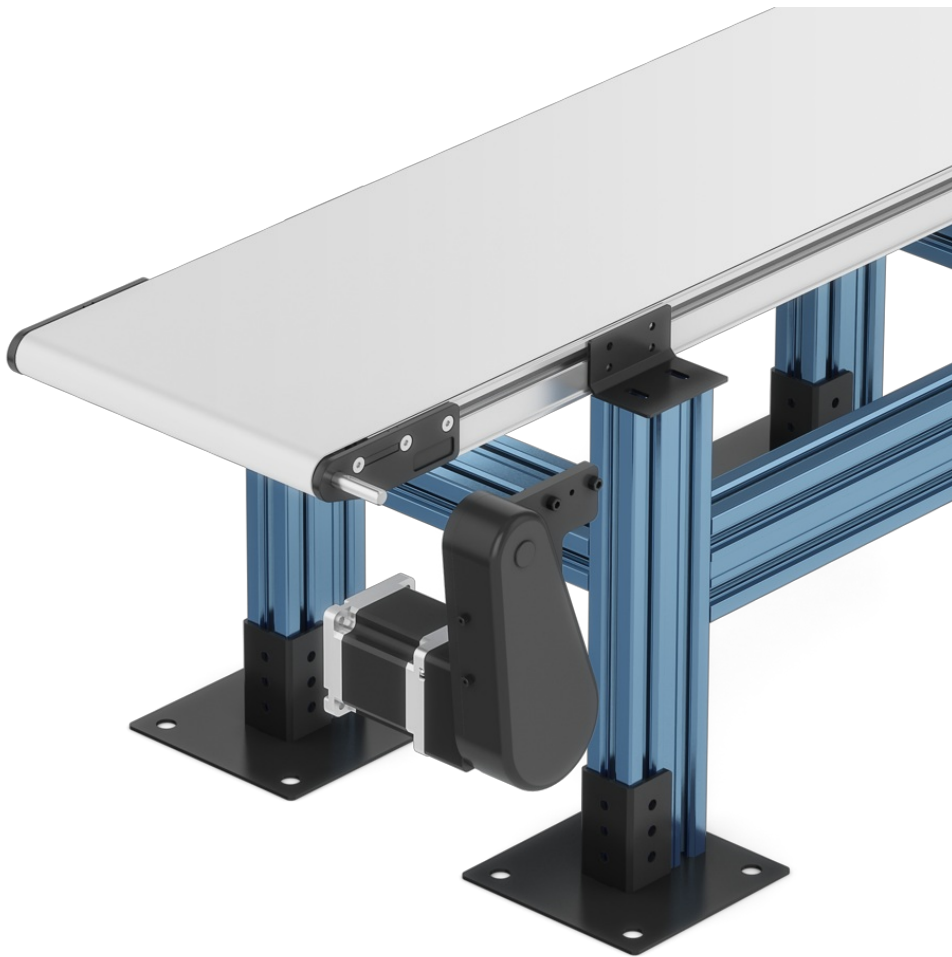
1. Assemble the Vention extrusion frame
2. If a 457mm or 610mm wide conveyor was ordered, follow the assembly instructions included in the package from Dorner.
3. Install the Vention Belt Conveyor Mounting Brackets to the T-slot on the Dorner Conveyor using the included T-bar and M6 fasteners. Tighten finger tight only.



4. Mount the conveyor onto the extrusion frame and connect the brackets to the extrusions using the included M8 fasteners. Once the conveyor is mounted in place, tighten the brackets which connect to the conveyor.



5. Install your Vention NEMA 34 motor to the input shaft of the belt conveyor motor mount.



6. Install the Vention compatible motor mount to the Dorner conveyor input shaft. The below images show the installation process provided by Dorner. Motor and mounting features will vary from the images below as the motor mount provided by Vention is a specialized model.

1. The following image shows the contents of the motor mount kit.



1. Vention X Dorner Motor Mount
2. Driven pulley with 12mm bore
3. Timing Belt
4. Key for the driven pulley
5. M6 fasteners used for mounting the motor mount
6. M6 fasteners used to install a Vention motor to the motor mount

2. Attach the motor mount (1) to the conveyor by removing the two countersunk M6 screws in the conveyor end plate, placing the motor mount over the plate, and re-installing the motor mount with the supplied longer M6 fasteners (5).



The motor mount and conveyor should look like this once the new fasteners are installed:





3. Install the key into the keyway of the conveyor shaft, then slide the driven pulley onto the shaft and tighten the set screws to fix it in place. Ensure that the pulley is in-line with the idler and driving pulley so that the belt will track straight.



4. Using the idler, apply tension to the belt so that the belt is tight enough so that 4.5N of force will cause the long section of the belt to deflect 3mm. Note the tensioner position should be driven by the main direction of travel of the conveyor. The idler should be on the slack side of the belt.

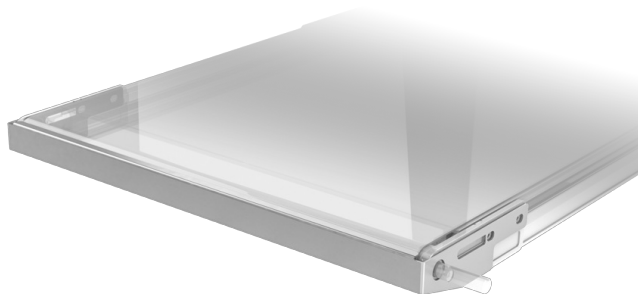


5. Install the sheet metal cover using the 4x M4 fasteners.



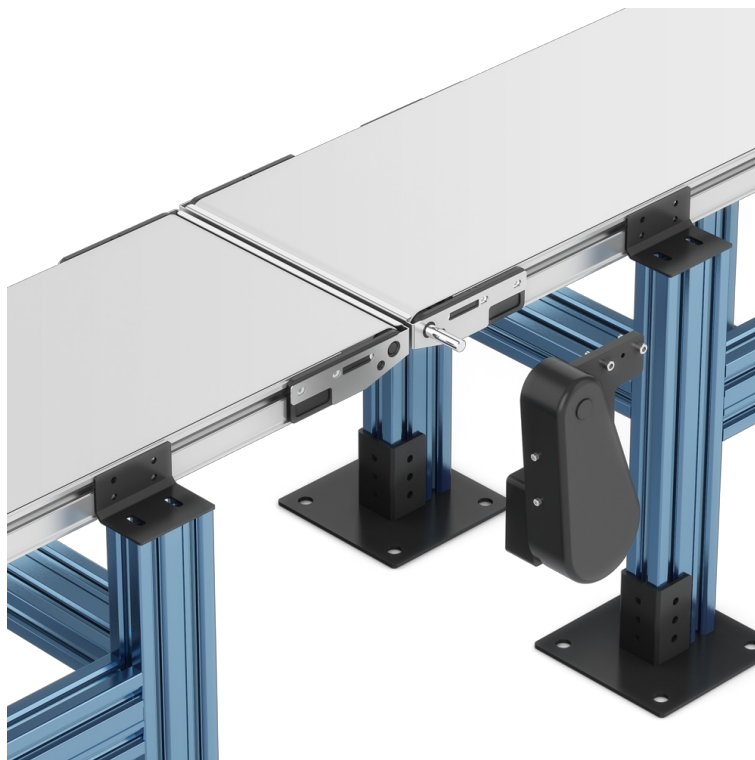
## Transfer Plate

To line up our belted conveyors end to end and to allow for seamless transfer from conveyor to conveyor, one can install our transfer plates to the adjacent ends of the conveyors. The conveyors can then be lined up transfer plate to transfer plate. The transfer plate comes in four different sizes to fit each of our conveyor widths and allows for the transfer of products of a minimum length of 22 mm.



To install the transfer plate, simply remove the two countersunk M6 screws in the conveyor end plate, remove the protective plastic on the transfer plate, and

place the transfer plate over the end plate. If you are installing the transfer plate on the drive side of the conveyor, place the transfer plate over the end plate before installing the motor mount. Subsequently, use the M6 socket head cap screws (5) that come with the motor mount to fasten the motor mount on top of the transfer plate.



Contrarily, if you are installing the plate on the end of the conveyor that doesn't have the motor mount, fasten the transfer plate with the socket head cap screw and washers included with the plate.



Once you have your transfer plates installed on all your conveyors, you can go ahead and line up your conveyors transfer plate to transfer plate and transfer parts from one conveyor to the next.